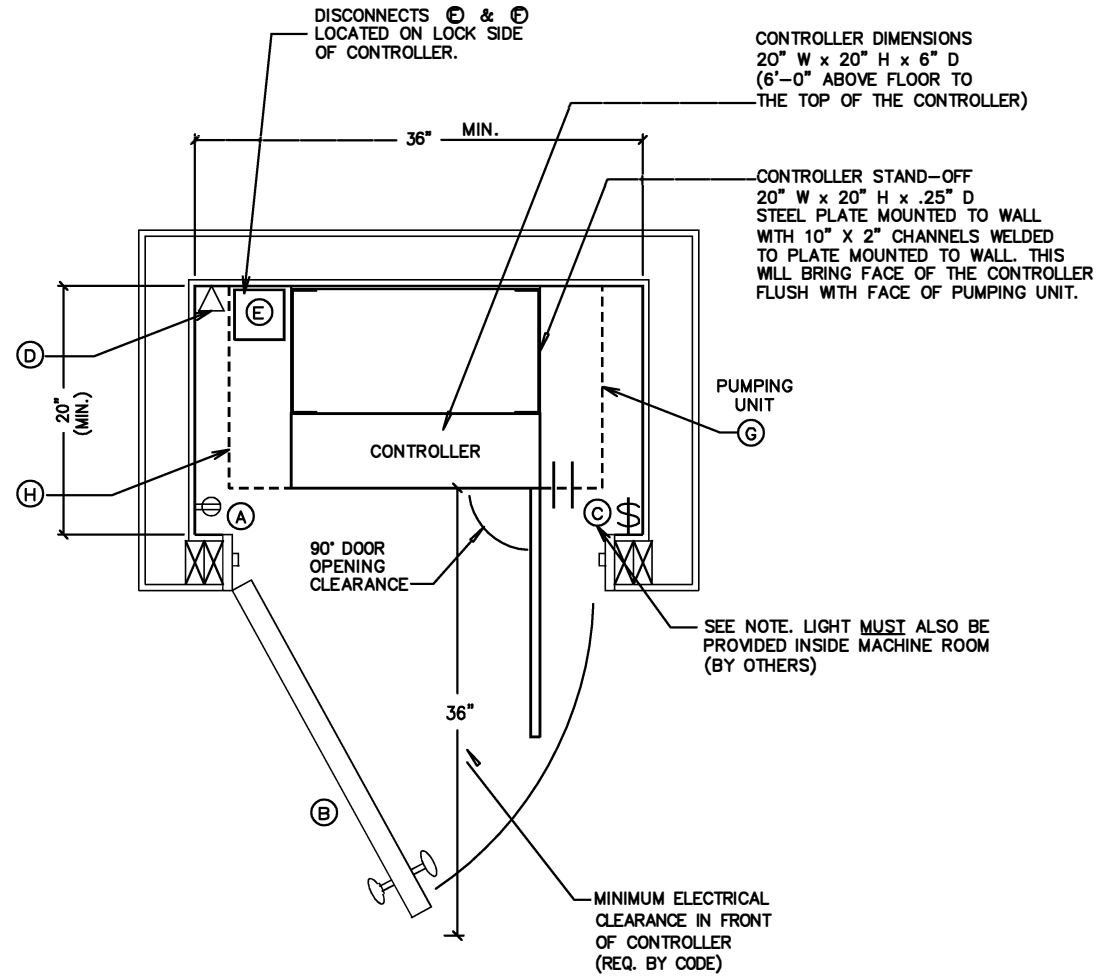


JOB NAME:  
ALTERNATE  
MACHINE ROOM

DRAWING NUMBER  
WILTEK-MR  
ALTERNATE

NOTES:

- (A) A GFI RECEPTACLE IS TO BE PROVIDED IN THE ELEVATOR MACHINE ROOM / SPACE (PER NEC 2002-BY OTHERS)
- (B) MACHINE ROOM DOOR TO BE A MINIMUM OF 30" WIDE AND SWING OUTWARD (BY OTHERS)
- (C) LIGHT SWITCH TO BE INSTALLED ADJACENT TO LOCK SIDE OF THE DOOR & LIGHT MUST BE PROVIDED INSIDE MACHINE ROOM (BY OTHERS)
- (D) PROVIDE A DEDICATED PHONE LINE TO THE ELEVATOR MACHINE ROOM AND INSTALL IN A 4" x 4" BOX WITH COVER. MUST HAVE A MINIMUM 8'-10" TAIL (BY OTHERS)
- (E) 230 VAC, 2 POLE, SINGLE PHASE, FUSED DISCONNECT WITH 30 AMP RK-5 FUSES (PER NEC 2002-BY OTHERS).
- (F) PROVIDE 120 V, FUSED DISCONNECT OR 15 AMP CIRCUIT BREAKER FOR ELEVATOR CAB INTERIOR LIGHTS (PER NEC 2002-BY OTHERS)
- (G) FLOOR MOUNT PUMPING UNIT DIMENSIONS: 16<sup>3</sup>/<sub>4</sub>" D x 28<sup>3</sup>/<sub>4</sub>" L x 26<sup>3</sup>/<sub>4</sub>" H (ON PADS)
- (H) 5'-0" MIN. HEADROOM REQ'D FOR ELEVATED PLATFORM/ STANDS.



ALTERNATE MACHINE ROOM PLAN VIEW

SCALE - NOT TO SCALE

NOTE: ALL DIMENSIONS ARE APPROXIMATE

DRAWING/ REVISION(S)

DRAWN:	CHECKED:	DATE:	DESCRIPTION
C.J.S.	C.J.S.	03/01/09	NEW DRAWING